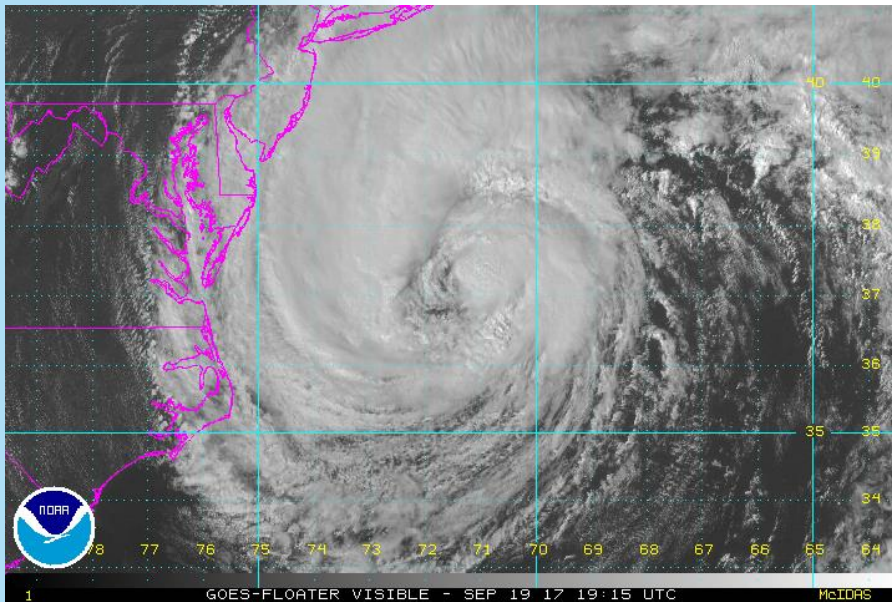


Latest Jose Briefing

Decision Support Briefing 10
As of: 6:30 am Wed. Sep. 20, 2017



What Has Changed?

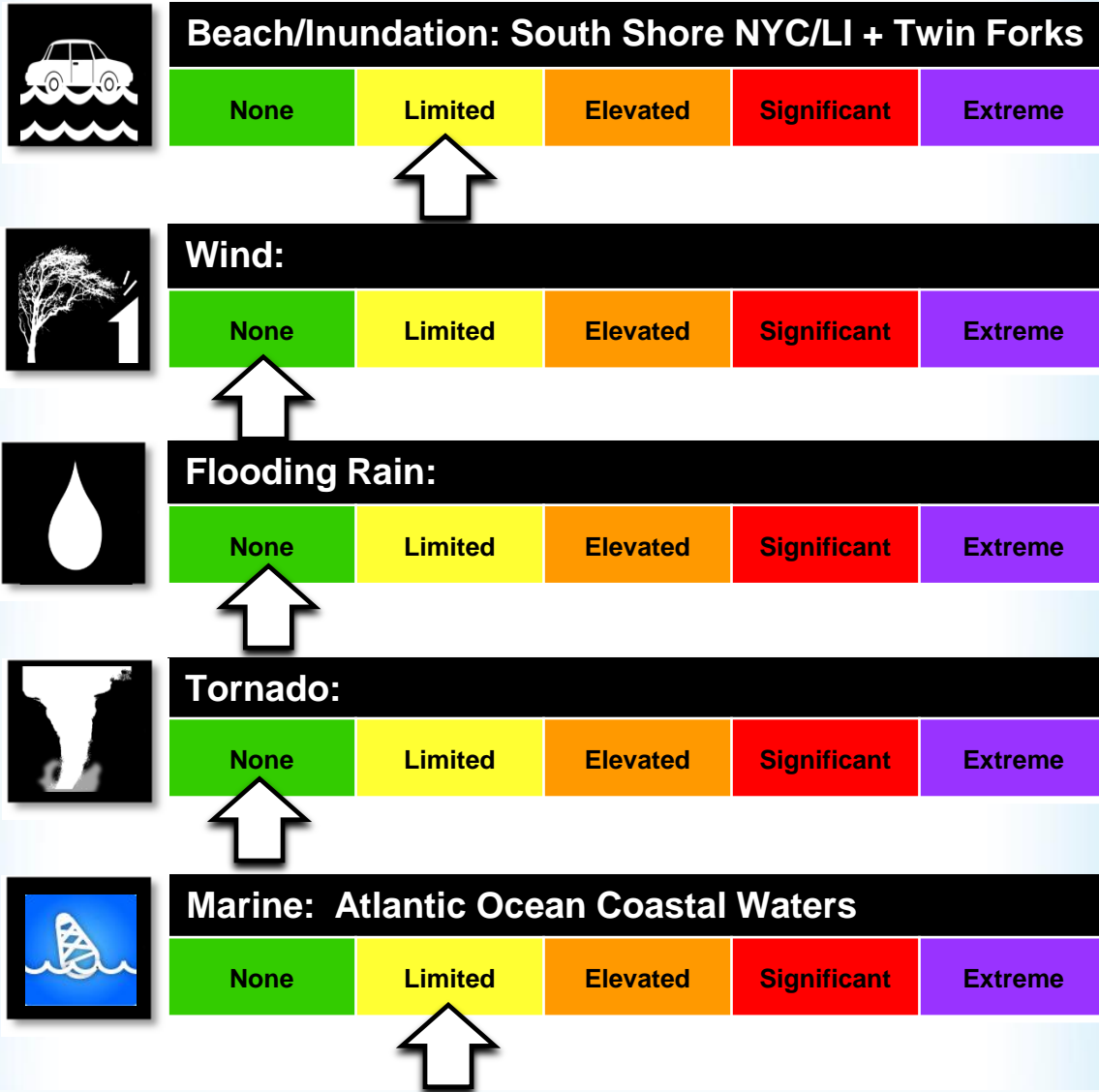
- ✓ **Tropical Storm Watch has been cancelled for Suffolk County.**
- ✓ **Tropical Storm Watch cancelled for the South Shore Bays and Peconic and Gardiners Bays. (Now Small Craft Advisories)**
- ✓ **Tropical Storm Warnings cancelled for Ocean waters from Sandy Hook, NJ to Fire Island Inlet.**



Main Points

Hazard	Impacts	Location	Timing
Rip Currents High Surf Beach Erosion	Dangerous surf and strong Rip Currents; Widespread dune erosion and wash-overs during high tides thru today.	Atlantic Ocean Beaches	Rip Current Risk – into the weekend High Surf - into Thursday
Marine	Tropical Storm Warning for 34 kt winds.	Atlantic Ocean coastal waters East of Fire Island Inlet.	Today
Coastal Flooding	Coastal Flood Advisory for widespread minor to locally moderate flooding.	Southwest CT, all of Long Island and along NY Harbor.	Around the times of high tides through the day Wednesday

Summary of Greatest Impacts

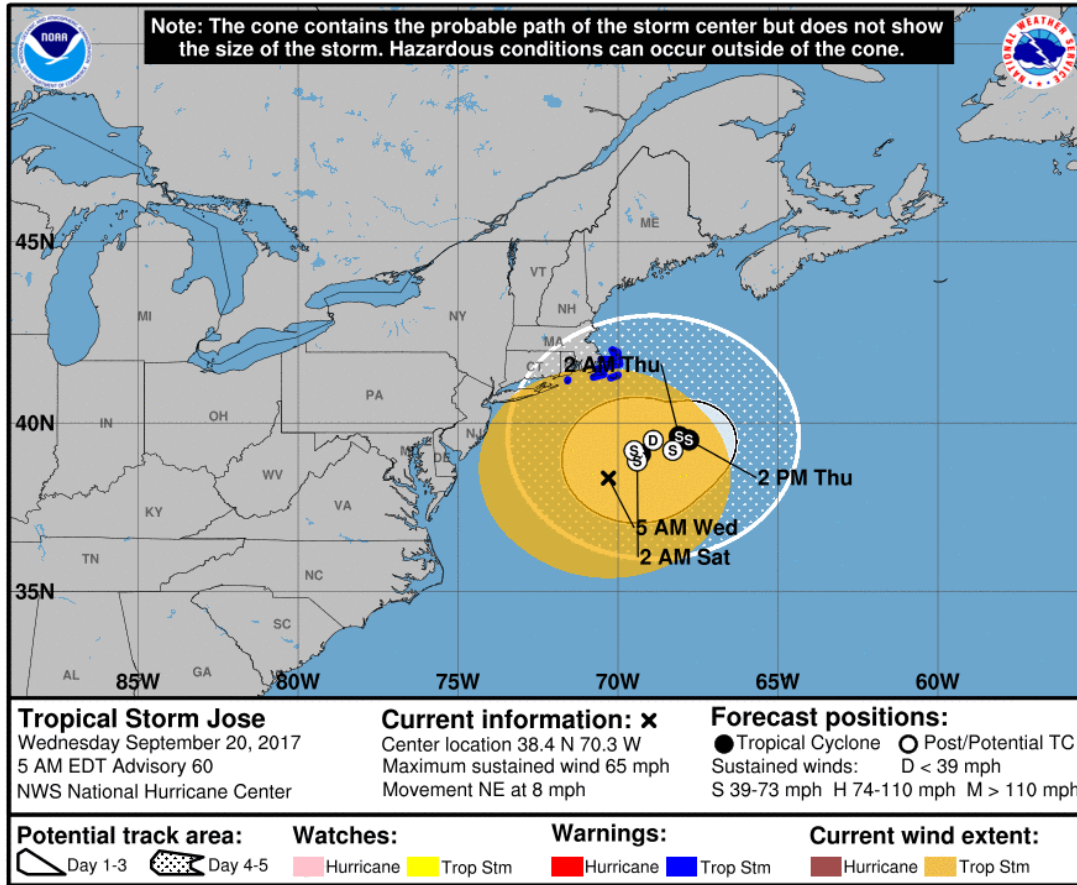


Note:

Hazard impact level definitions can be found on our Hurricane Threats and Impacts Page <http://www.weather.gov/srh/tropical?ofice=okx#hti>

Tropical Cyclone Jose

5 am NHC Forecast Advisory

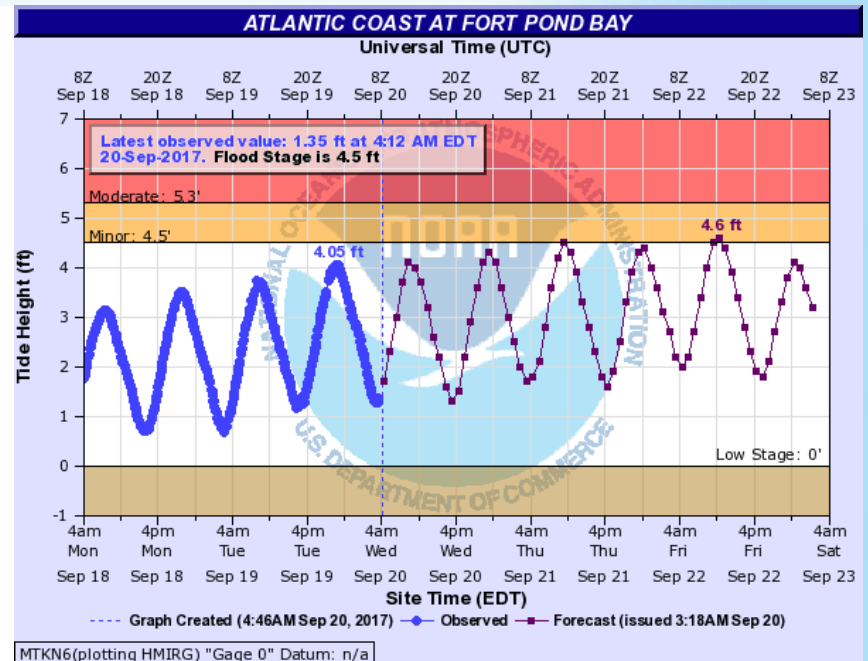
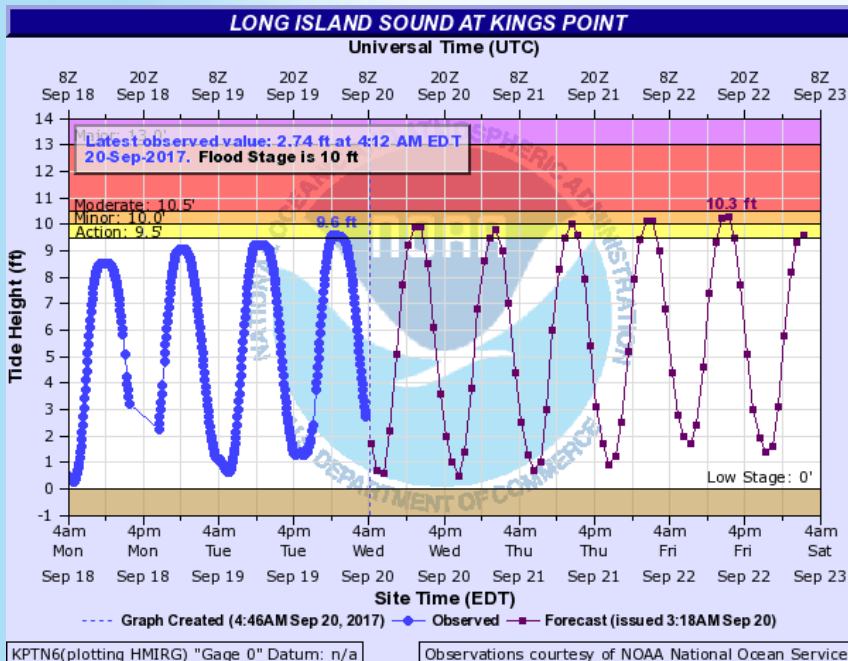


- ✓ Tropical Storm Jose continues to slowly weaken as it passes southeast of Long Island today.
- ✓ Surge impacts will be felt well outside the cone.

Surge/Inundation Hazard and Impacts

Surge/Inundation Threat:

- ✓ Minor to locally Moderate Coastal Flooding around the times of high tides today.
- ✓ Coastal Flood Advisories today for Southwest CT, all of Long Island and along NY Harbor.





Event Summary

- ✓ **Tropical Storm Warnings continue for the ocean waters east of Fire Island Inlet NY**
- ✓ Coastal Flood Advisories continue today.
- ✓ High Surf Advisory along with Dangerous Rip currents continue.
- ✓ Small Craft Should Remain in port as Tropical Storm Warnings continue for eastern portions of the Atlantic Ocean coastal waters south of Long Island.

